

CABLE MANAGEMENT SOLUTIONS

THE BEST SOLUTIONS FOR YOUR PROJECTS

TABLE OF CONTENT

Cable Trays and Accessories

Cable Trays.....	03
Cable Tray Accessories.....	04
Cable Tray – ECON Series.....	05
Cable Tray Accessories – ECON Series.....	06

Cable Ladders and Accessories

Cable Ladder.....	08
Cable Ladder Accessories.....	08-09

Cable Trunking and Accessories

Cable Trunking.....	11
Cable Trunking Accessories.....	11-12

Floor Trunking and Accessories

Floor Trunking.....	14-15
---------------------	-------

Covers and Supporting Accessories

Covers.....	17
Support Accessories.....	18

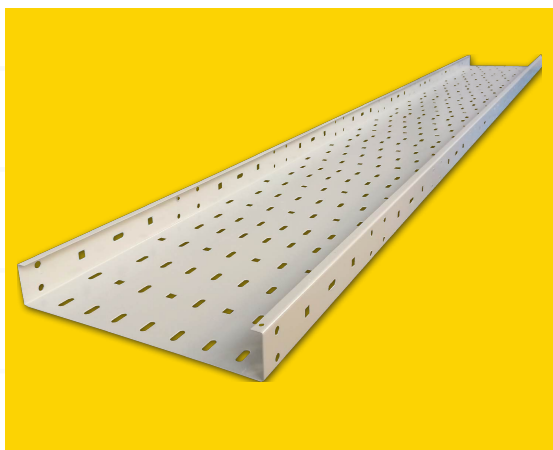
Technical Specifications

Technical Specifications.....	19-20
-------------------------------	-------



GLEAP
CABLE MANAGEMENT SOLUTIONS

CABLE TRAYS AND ACCESSORIES

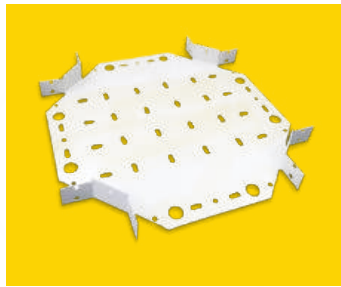


LEAP cable trays are designed as a complete system with simple accessories. It is a durable and sustainable solution for supporting cable, which is easy to install, modify and maintain, with highest standards.

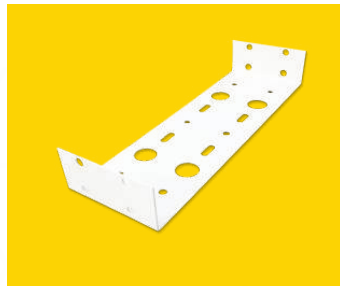
Suitable for a wide variety of industries and installations, LEAP perforated cable tray offers the sure choice for high quality, high performance cable management

LEAP Perforated Cable Tray - STANDARD Series

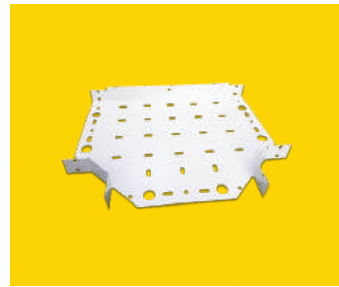
PART NO	DESCRIPTION	WIDTH (mm)	FLANGE HEIGHT (mm)	THICKNESS (mm)	LENGTH (m)	WEIGHT (kg/m)	ACCESSORIES THICKNESS (mm)
CTPC	Cable Tray	100	25	1.0	2.4	1.61	1.2
CTPC	Cable Tray	150	25	1.0	2.4	2.12	1.2
CTPC	Cable Tray	225	25	1.2	2.4	3.41	1.5
CTPC	Cable Tray	300	25	1.2	2.4	4.29	1.5
CTPC	Cable Tray	450	25	1.5	2.4	7.57	1.5
CTPC	Cable Tray	600	25	1.5	2.4	9.78	1.5
CTPC	Cable Tray	750	25	1.5	2.4	11.99	1.5
CTPC	Cable Tray	900	25	1.5	2.4	14.19	1.5
CTPC	Cable Tray	100	50	1.0	2.4	2.12	1.5
CTPC	Cable Tray	150	50	1.0	2.4	2.61	1.5
CTPC	Cable Tray	225	50	1.2	2.4	4.00	1.5
CTPC	Cable Tray	300	50	1.2	2.4	4.88	1.5
CTPC	Cable Tray	450	50	1.5	2.4	8.29	1.5
CTPC	Cable Tray	600	50	1.5	2.4	10.50	1.5
CTPC	Cable Tray	750	50	2.0	2.4	16.94	1.5
CTPC	Cable Tray	900	50	2.0	2.4	19.95	1.5
CTPC	Cable Tray	100	75	1.2	2.4	3.11	1.5
CTPC	Cable Tray	150	75	1.2	2.4	3.70	1.5
CTPC	Cable Tray	225	75	1.2	2.4	4.59	1.5
CTPC	Cable Tray	300	75	1.5	2.4	6.84	1.5
CTPC	Cable Tray	450	75	2.0	2.4	12.22	1.5
CTPC	Cable Tray	600	75	2.0	2.4	15.16	1.5
CTPC	Cable Tray	750	75	2.0	2.4	18.10	1.5
CTPC	Cable Tray	900	75	2.0	2.4	21.05	1.5
CTPC	Cable Tray - LD	100	50	0.8	2.4	1.70	1.5
CTPC	Cable Tray - LD	150	50	0.8	2.4	2.09	1.5
CTPC	Cable Tray - LD	225	50	1.0	2.4	3.33	1.5
CTPC	Cable Tray - LD	300	50	1.0	2.4	4.07	1.5
CTPC	Cable Tray - LD	450	50	1.2	2.4	6.65	1.5
CTPC	Cable Tray - LD	600	50	1.2	2.4	8.41	1.5
CTPC	Cable Tray - LD	750	50	1.5	2.4	12.72	1.5
CTPC	Cable Tray - LD	900	50	1.5	2.4	14.93	1.5



Flat 4 Way
Equal Intersection



Coupler



Flat Equal Tee



45° Flat Bend



External 90°
Riser Bend



Internal 90°
Riser Bend



Flat 90° Bend



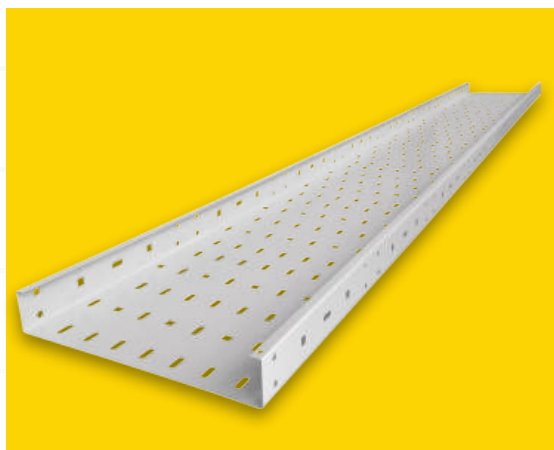
Stop end

LEAP Perforated Cable Tray Accessories – STANDARD Series

PART NO	DESCRIPTION	WIDTH (mm)	FLANGE HEIGHT (mm)	THICKNESS (mm)
CTPCCP	Cable Tray Coupler	100 150 225 300 450 600 750 900	25 50 75	1.2 1.5 2.0
CTPCFET	Cable Tray Flat Equal Tee	100 150 225 300 450 600 750 900	25 50 75	1.2 1.5 2.0
CTPCF4EI	Cable Tray Flat 4way Intersection	100 150 225 300 450 600 750 900	25 50 75	1.2 1.5 2.0
CTPC90FB	Cable Tray Flat 90 Degrees Bend	100 150 225 300 450 600 750 900	25 50 75	1.2 1.5 2.0
CTPC90IR	Cable Tray Internal 90 Riser Bend	100 150 225 300 450 600 750 900	25 50 75	1.2 1.5 2.0
CTPC90IR	Cable Tray External 90 Riser Bend	100 150 225 300 450 600 750 900	25 50 75	1.2 1.5 2.0
CTPC45FB	Cable Tray Flat 45 Degrees Bend	100 150 225 300 450 600 750 900	25 50 75	1.2 1.5 2.0
CTPCR	Cable Tray Reducer	100 150 225 300 450 600 750 900	25 50 75	1.2 1.5 2.0
CTPCSE	Cable Tray Stop End	100 150 225 300 450 600 750 900	25 50 75	1.2 1.5 2.0

Material & Finish

Material	Electro Galvanized Steel	Aluminum/Zinc	Stainless Steel
Finish	Epoxy polyester powder for indoors / Polyester (P) for outdoors (Thickness - 100 ± 20% microns)		Hot Dip Galvanized
Color	RAL7032 (Standard)	RAL9005	Others on request

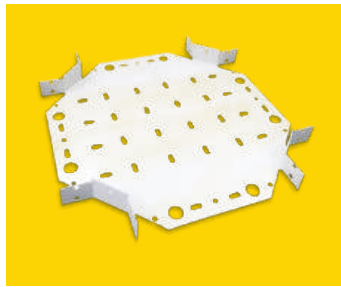


LEAP Cable Tray - ECON Series is an economic and cost effective solution for high performance cable management systems.

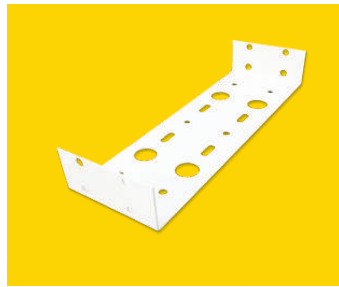
LEAP Perforated Cable Tray - ECON Series

PART NO	DESCRIPTION	WIDTH (mm)	FLANGE HEIGHT (mm)	THICKNESS (mm)	LENGTH (m)	WEIGHT (kg/m)	ACCESSORIES THICKNESS (mm)
CTXPC	Cable Tray - ECON	100	50	0.8	2.4	1.26	1.5
CTXPC	Cable Tray - ECON	200	50	0.8	2.4	1.88	1.5
CTXPC	Cable Tray - ECON	300	50	0.8	2.4	2.51	1.5
CTXPC	Cable Tray - ECON	100	50	1.0	2.4	1.57	1.5
CTXPC	Cable Tray - ECON	200	50	1.0	2.4	2.36	1.5
CTXPC	Cable Tray - ECON	300	50	1.0	2.4	3.14	1.5
CTXPC	Cable Tray - ECON	100	50	1.2	2.4	1.88	1.5
CTXPC	Cable Tray - ECON	200	50	1.2	2.4	2.83	1.5
CTXPC	Cable Tray - ECON	300	50	1.2	2.4	3.77	1.5
CTXPC	Cable Tray - ECON	100	50	1.5	2.4	2.36	1.5
CTXPC	Cable Tray - ECON	200	50	1.5	2.4	3.53	1.5
CTXPC	Cable Tray - ECON	300	50	1.5	2.4	4.71	1.5
CTXPC	Cable Tray - ECON	400	50	1.5	2.4	5.89	1.5
CTXPC	Cable Tray - ECON	500	50	1.5	2.4	7.07	1.5
CTXPC	Cable Tray - ECON	600	50	1.5	2.4	8.24	1.5
CTXPC	Cable Tray - ECON	150	75	1.2	2.4	2.83	1.5
CTXPC	Cable Tray - ECON	300	75	1.2	2.4	4.24	1.5
CTXPC	Cable Tray - ECON	150	75	1.5	2.4	3.53	1.5
CTXPC	Cable Tray - ECON	300	75	1.5	2.4	5.3	1.5
CTXPC	Cable Tray - ECON	450	75	1.5	2.4	7.07	1.5
CTXPC	Cable Tray - ECON	600	75	1.5	2.4	8.83	1.5

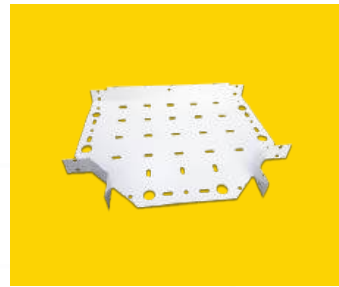
CABLE TRAY ACCESSORIES - ECON SERIES



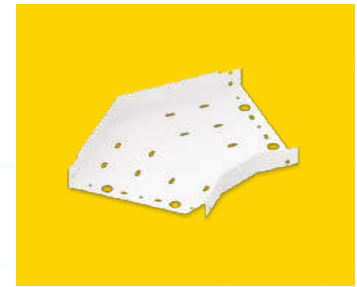
Flat 4 Way
Equal Intersection



Coupler



Flat Equal Tee



45° Flat Bend



External 90°
Riser Bend



Internal 90°
Riser Bend



Flat 90° Bend



Stop end

LEAP Perforated Cable Tray Accessories - ECON Series

PART NO	DESCRIPTION	WIDTH (mm)								THICKNESS (mm)		
		FLANGE HEIGHT (50 mm)				FLANGE HEIGHT (75 mm)						
CTXPCCP	Cable Tray Coupler	100	200	300	400	500	600	150	300	450	600	1.5
CTXPCCP	Cable Tray Flat Equal Tee	100	200	300	400	500	600	150	300	450	600	1.5
CTXPCF4EI	Cable Tray Flat 4 way Intersection	100	200	300	400	500	600	150	300	450	600	1.5
CTXPC90FB	Cable Tray Flat 90 Degrees Bend	100	200	300	400	500	600	150	300	450	600	1.5
CTXPC90IR	Cable Tray Internal 90 Riser Bend	100	200	300	400	500	600	150	300	450	600	1.5
CTXPC90ER	Cable Tray External 90 Riser Bend	100	200	300	400	500	600	150	300	450	600	1.5
CTXPC45FB	Cable Tray Flat 45 Degrees Bend	100	200	300	400	400	600	150	300	450	600	1.5
CTXPCR	Cable Tray Reducer	100	200	300	400	500	600	150	300	450	600	1.5
CTXPCSE	Cable Tray Stop End	100	200	300	400	500	600	150	300	450	600	1.5

Material & Finish

Material	Electro Galvanized Steel	Aluminum/Zinc	Stainless Steel
Finish	Epoxy polyester powder for indoors / Polyester (P) for outdoors (Thickness - 100 ± 20% microns)		
Color	RAL7032 (Standard)	RAL9005	Others on request



GLEAP
CABLE MANAGEMENT SOLUTIONS

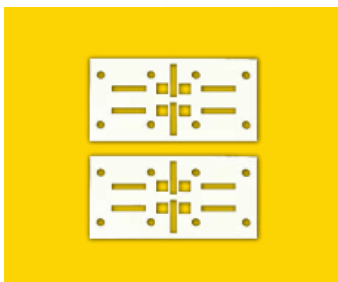
CABLE LADDERS AND ACCESSORIES



LEAP Cable Ladder is a prefabricated metal structure consisting of two side rails connected by individual transverse C-type rungs. Cable Ladder Trays are the most common and the most reliable types of trays. They also provide maximum ventilation for cabling and easier to maintain, proves more adaptable to changing needs.

PART NO	DESCRIPTION	WIDTH (mm)	FLANGE HEIGHT (mm)	THICKNESS (mm)	LENGTH (m)	WEIGHT (kg/m)	ACCESSORIES THICKNESS (mm)
CLPC	Cable Ladder	150	75	1.5	2.4	3.85	1.5
CLPC	Cable Ladder	300	75	1.5	2.4	4.40	1.5
CLPC	Cable Ladder	450	75	2.0	2.4	6.57	2.0
CLPC	Cable Ladder	600	75	2.0	2.4	7.30	2.0
CLPC	Cable Ladder	750	75	2.0	2.4	8.03	2.0
CLPC	Cable Ladder	900	75	2.0	2.4	8.75	2.0

CABLE LADDER ACCESSORIES



Horizontal Adjustable Coupler



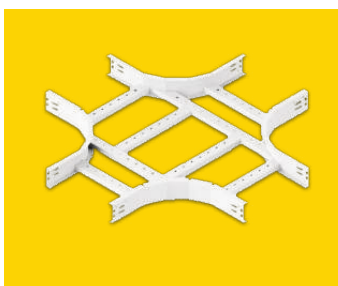
90° Inside Riser



90° Outside Riser



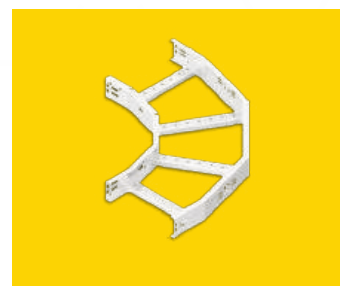
Flat 45° Elbow



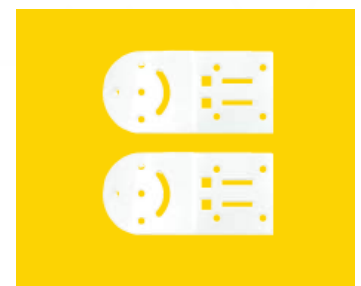
Flat 4 Way Equal Intersection



Flat 90° Elbow



Flat 90° Bend



Vertical Adjustable Coupler

PART NO	DESCRIPTION	WIDTH (mm)							FLANGE HEIGHT (mm)	THICKNESS (mm)	
CLPCSC	Cable Ladder Straight Coupler	200							75	2.0	
CLPCHAC	Cable Ladder Horizontal Adjustable Coupler	200							75	2.0	
CLPCVAC	Cable Ladder Vertical Adjustable Coupler	300							75	2.0	
CLPCR	Cable Ladder Reducer	150							75	2.0	
CLPDOB	Cable Ladder Drop Out Bracket	150							75	2.0	
CLPCFET	Cable Ladder Flat Equal Tee	150	300	450	600	750	900	75	1.5	2.0	
CLPCF4EI	Cable Ladder Flat 4way Equal Intersection	150	300	450	600	750	900	75	1.5	2.0	
CLPCSE	Cable Ladder Stop End	150	300	450	600	750	900	75	1.5	2.0	
CLPC90FB	Cable Ladder Flat 90 Bend	150	300	450	600	600	900	75	1.5	2.0	
CLPC90IR	Cable Ladder 90 Internal Riser Bend	150	150	450	600	750	900	75	1.5	2.0	
CLPC90ER	Cable Ladder 90 External Riser Bend	150	300	450	600	750	900	75	1.5	2.0	
CLPC45FB	Cable Ladder 45 Degrees Flat Bend	150	300	450	600	750	900	75	1.5	2.0	

Material & Finish

Material	Electro Galvanized Steel	Aluminum/Zinc	Stainless Steel
Finish	Epoxy polyester powder for indoors / Polyester (P) for outdoors (Thickness - 100 ± 20% microns)		Hot Dip Galvanized
Color	RAL7032 (Standard)	RAL9005	Others on request



CABLE TRUNKING AND ACCESSORIES





LEAP cable trunking system will protect cables from dust or water ingress. Cable trunking is an enclosure usually with a rectangular cross section, and with one removable or hinged side, that is used to protect cables and provide space for other electrical equipments

PART NO	DESCRIPTION	WIDTH (mm)	FLANGE HEIGHT (mm)	THICKNESS (mm)	LENGTH (m)	WEIGHT (kg/m)	ACCESSORIES THICKNESS (mm)
CTRPC	Cable Trunking	50	50	0.8	2.4	1.67	1.0
CTRPC	Cable Trunking	75	50	0.8	2.4	2.19	1.0
CTRPC	Cable Trunking	100	50	0.8	2.4	2.45	1.0
CTRPC	Cable Trunking	100	100	0.8	2.4	3.24	1.0
CTRPCEC	Cable Trunking - LD	50	50	0.6	2.4	1.25	1.0
CTRPCEC	Cable Trunking - LD	75	50	0.6	2.4	1.66	1.0
CTRPCEC	Cable Trunking - LD	100	50	0.6	2.4	1.95	1.0
CTRPCEC	Cable Trunking - LD	100	100	0.6	2.4	2.54	1.0

CABLE TRUNKING ACCESSORIES



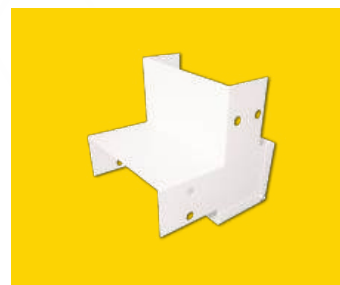
Flat 4 way Equal Intersection



External Angle



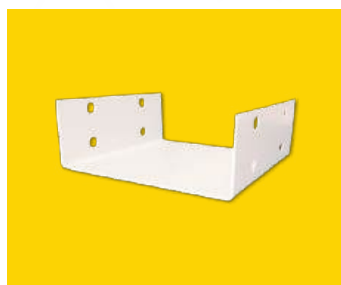
Flat Angle



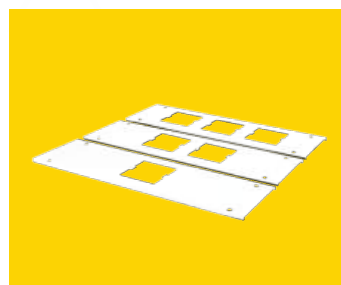
Internal Angle



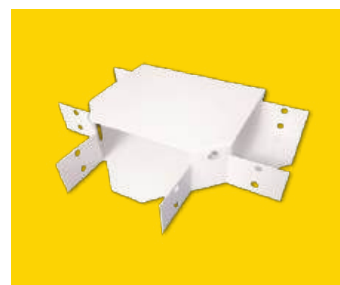
Stop End



Coupler



Socket lids



Flat Tee

CABLE TRUNKING ACCESSORIES

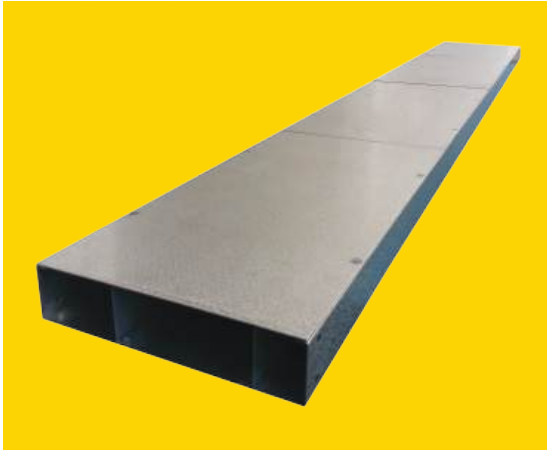
PART NO	DESCRIPTION	WIDTH (mm)	FLANGE HEIGHT (mm)	THICKNESS (mm)
CTRPCCP	Cable Trunking Coupler	50 75 100	50	100 1.0
CTRPCFET	Cable Trunking Flat Equal Tee	50 75 100	50	100 1.0
CTRPCF4EI	Cable Trunking Flat 4way Intersection	50 75 100	50	500 1.0
CTRPC90FB	Cable Trunking Flat 90 Degrees Bend	50 75 100	50	100 1.0
CTRPC90IB	Cable Trunking Internal 90 Bend	50 75 100	50	100 1.0
CTRPC90EB	Cable Trunking External 90 Bend	50 75 100	50	100 1.0
CTRPCSE	Cable Trunking Stop End	50 75 100	50	100 1.0
CTRPCHS	Cable Trunking Hanger Support	50 75 100	50	100 1.0
CTRMPC	Modular Cable Trunking Base	100	50	100 0.8
CTRMPCSL	Cable Trunking Socket Lid 1 S/O	100x300		0.8
CTRMPCSL	Cable Trunking Socket Lid 2 S/O	100x300		0.8
CTRMPCSL	Cable Trunking Socket Lid 3 S/O	100x300		0.8



FLOOR TRUNKING AND ACCESSORIES

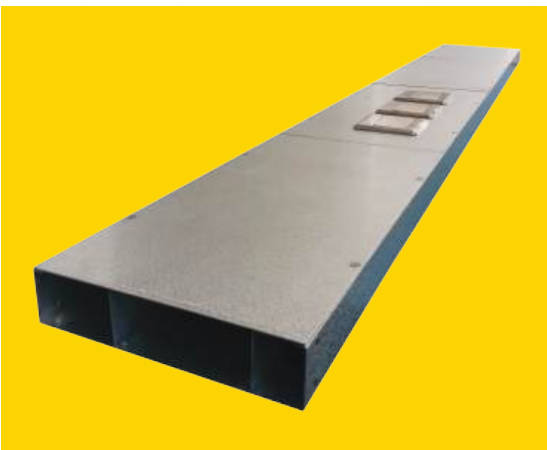
LEAP Floor Trunking Systems solutions incorporate a range of products for the distribution of power and data services, it is a coordinated set of containments that protect, segregate, contain, and route cables within a given environment.

LEAP UNDER FLOOR TRUNKING



Under Floor Trunking System is a pre-cast cable containment service in position within the office premises. Running from the main distribution boards for electrical / data voice / CCMS services routed via the vertical elbow, junction boxes and ducting to the services outlet boxes underneath the work stations.

LEAP FLUSH FLOOR TRUNKING



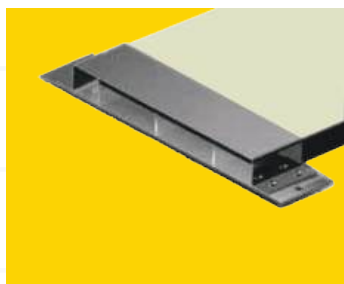
Flush Floor Trunking Systems, are more popular than Under Floor Trunking systems in areas where exibility is desired, with an increased demand on cable capacity. Office environment demands the usage of an increasing number of data and telephone cables.

The advent of structured cabling has resulted in greater space requirements and therefore more constraints from the installation perspective.

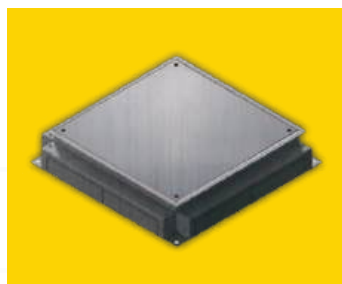
LEAP RAISED FLOOR TRUNKING



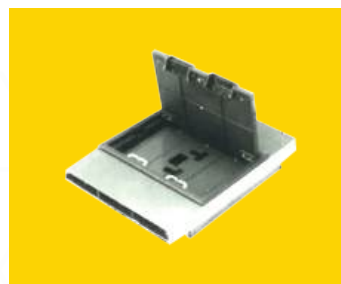
Raised Floor Trunking Systems are increasingly adopted in new commercial buildings. Cable containment services are in modular design for the day-to-day changes within the office premises, for the ease of cable termination for the various services, such as computer / data / voice and BMS / CCMS structured cabling, where the raised floor makes a new level for cables containment in the floor void.



Clamping Bracket



Floor Trunking - Tee



Floor Trunking Floor Box



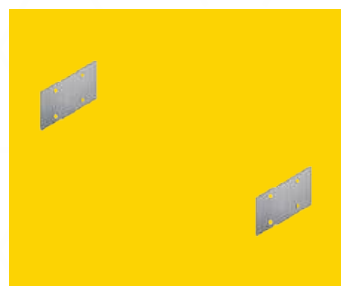
Floor Trunking Vertical Access box



End Cap



Fixing Bracket



Coupler



Support Bracket Adjustable Height

DESCRIPTION	WIDTH (mm)	FLANGE HEIGHT (mm)	LENGTH (m)	THICKNESS (mm)		ACCESSORIES THICKNESS (mm)
				Base	Lid	
Under Floor Trunking 1 comp	50 75 100 150	25 38	2.4	1-1.5	1-2	1-2
Under Floor Trunking 2 comp	150 225 300 375 450	25 38	2.4	1-1.5	1-2	1-2
Under Floor Trunking 3 comp	150 225 300 375 450	25 38	2.4	1-1.5	1-2	1-2
Under Floor Trunking 4 comp	375 450	25 38	2.4	1-1.5	1-2	1-2
Flush Floor Trunking 1 comp	100 150	25 65	2.4	1-1.5	1-2	1-2
Flush Floor Trunking 2 comp	100 150 225 300 400	25 65	2.4	1-1.5	1-2	1-2
Flush Floor Trunking 3 comp	150 225 300 400	25 65	2.4	1-1.5	1-2	1-2
Raised Floor Trunking 1 comp	75 100 150 225	38	2.4	1-1.5	1-2	1-2
Raised Floor Trunking 2 comp	150 225 300	38	2.4	1-1.5	1-2	1-2
Raised Floor Trunking 3 comp	150 225 300 375 450	38	2.4	1-1.5	1-2	1-2
Raised Floor Trunking 4 comp	375 450	38	2.4	1-1.5	1-2	1-2



GLEAP
CABLE MANAGEMENT SOLUTIONS

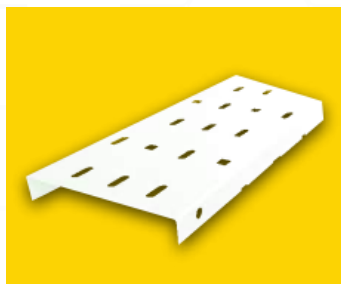
**COVERS
AND SUPPORTING
ACCESSORIES**

LEAP offers a wide variety of covers for Cable Trays and Ladders to provide protection for the cables contained within the system from sunlight, environmental elements, dirt, debris, and falling objects.

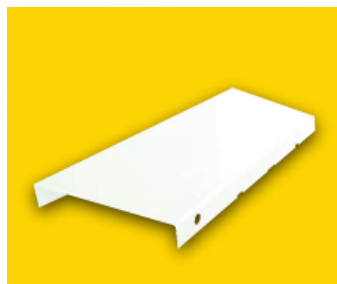
TRAY & LADDER COVERS



Plain Cover



Ventilated Cover



Canopy Type Cover



Elevated Cover Bracket

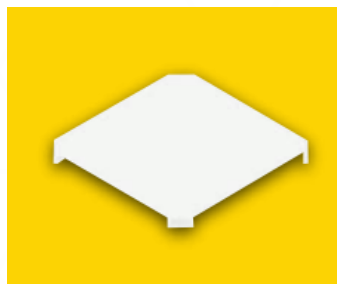
ACCESSORY COVERS



45° Flat Bend Cover



90° Flat Bend Cover



Flat Equal Tee Cover



4 Way Equal Intersection Cover



Plain Cover



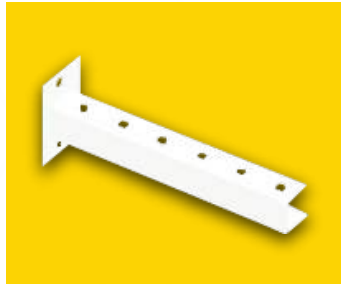
Ventilated Cover

Material & Finish

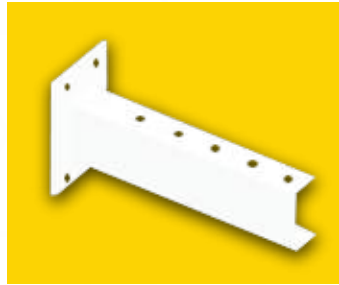
Material	Electro Galvanized Steel	Aluminum/Zinc	Stainless Steel
Finish	Epoxy polyester powder for indoors / Polyester (P) for outdoors (Thickness - 100 ± 20% microns)		Hot Dip Galvanized
Color	RAL7032 (Standard)	RAL9005	Others on request

LEAP Supporting Accessories are manufactured to comply with LEAP Cable Trays, Ladders and Trunkings.

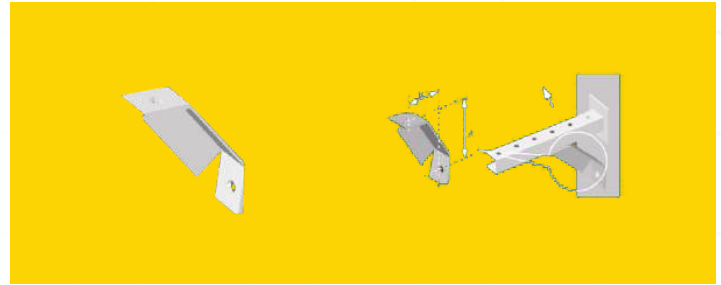
CANTILEVER SUPPORT ACCESSORIES



Cantilever Support
35x40mm for General
Duty Applications



Cantilever Support
35x80mm for Heavy
Duty Applications



Cantilever Arm Prop

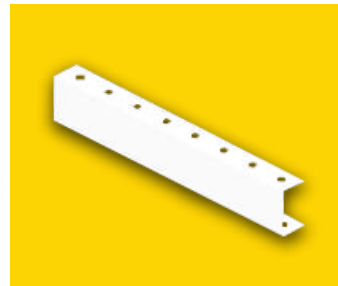
HANGER SUPPORT ACCESSORIES

Hanger supports are hanged by M10 threaded rod. The hanger support has 40mm extra width than cable tray or ladder with 10mm hole to take M10 threaded rod.

Holes on the cantilever support & hanger support can use to bolt cable trays & ladders on to it. In case of holes on cantilever support or hanger support is not coincide with holes on cable ladder rung, ladder fixing brackets can be used. Holes on the cantilever support & hanger support can use to fix, data cable pipes, fiber optics cable pipes, compressed air pipes, water pipes, air conditioner pipes, gas pipes, lamps, signs, etc.



Hanger Support
35x40mm
for General Duty
Applications

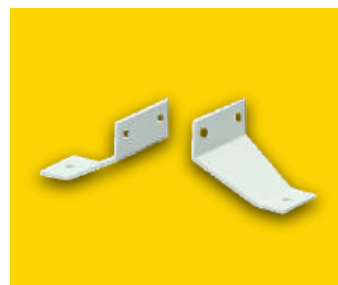


Hanger Support
35x40mm
for General Duty
Applications

FIXING BRACKETS



Cable Ladder Elevated
Fixing Bracket



Cable Ladder
Fixing Bracket

MATERIAL SPECIFICATION

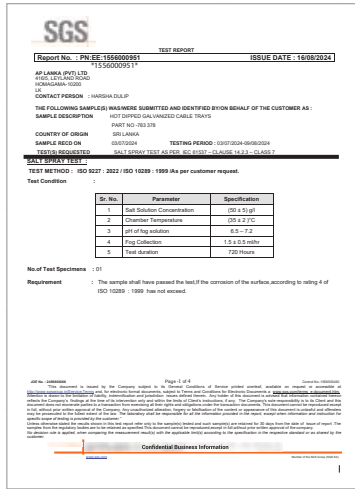
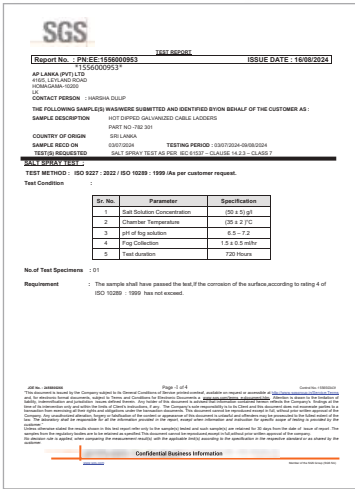
Product	Materials	Finishes	THICKNESS (mm)
Cable Tray	Electro Galvanized	Epoxy Polyester Powder Coated to RAL 7032	0.8 - 2.0
	HDGA	Epoxy Polyester Powder Coated to RAL 9006	0.8 - 2.0
	Zinc Aluminum	Unpainted	1.0 - 2.0
	Aluminum Alloy	Unpainted	1.0 - 2.0
	Stainless Steel	Unpainted	1.0 - 2.0
Cable Ladders	Electro Galvanized	Epoxy Polyester Powder Coated to RAL 7032	1.5 - 2.0
	HDGA	Epoxy Polyester Powder Coated to RAL 9006	1.5 - 2.0
	Zinc Aluminum	Unpainted	1.5 - 2.0
	Aluminum Alloy	Unpainted	2.0
	Stainless Steel	Unpainted	1.5 - 2.0
Cable Trunkings	Electro Galvanized	Epoxy Polyester Powder Coated to RAL 7032	0.6 - 0.8
	HDGA	Epoxy Polyester Powder Coated or Unpainted	0.6 - 0.8
	Zinc Aluminum	Unpainted	0.6 - 0.8
	Aluminum Alloy	Unpainted	0.6 - 0.8
	Stainless Steel	Unpainted	0.6 - 0.8
Floor Trunkings	Electro Galvanized	Epoxy Polyester Powder Coated to RAL 9006	1.0 - 2.0
	HDGA	Epoxy Polyester Powder Coated to RAL 9006	1.0 - 2.0
Accessories	Electro Galvanized	Epoxy Polyester Powder Coated to RAL 7032	1.0 - 2.0
	HDGA	Epoxy Polyester Powder Coated to RAL 9006	1.0 - 2.0
	Zinc Aluminum	Unpainted	1.0 - 2.0
	Aluminum Alloy	Unpainted	1.0 - 2.0
	Stainless Steel	Unpainted	1.0 - 2.0
Covers	Electro Galvanized	Epoxy Polyester Powder Coated to RAL 7032	0.8 - 1.2
	HDGA	Epoxy Polyester Powder Coated to RAL 9006	1.0 - 2.0
	Zinc Aluminum	Unpainted	1.0 - 2.0
	Aluminum Alloy	Unpainted	1.0 - 2.0
	Stainless Steel	Unpainted	1.0 - 2.0
Support Systems	Electro Galvanized	Epoxy Polyester Powder Coated to RAL 7032	1.0 - 2.0
	HDGA	Epoxy Polyester Powder Coated to RAL 9006	1.0 - 2.0
	Zinc Aluminum	Unpainted	1.0 - 2.0
	Aluminum Alloy	Unpainted	1.0 - 2.0
	Stainless Steel	Unpainted	1.0 - 2.0

PAINT SPECIFICATIONS

Color	- RAL 7032 or RAL 9006 or any other color on request
Type	- Epoxy polyester powder for indoors / Polyester (P) for outdoors
Gloss Level	- Semi-Gloss 50% - 70%
Coating Thickness	- 60-80µm, Stoved at 180°C
Pre-Treatment	- High pressure spray of water and phosphating chemicals for de-greasing, de-rusting and phosphating
Pre - heating & curing	- Electrical IR (Infra Red) heaters

TEST REPORTS

Hot Dipped Galvanized (HDG) Cable Trays & Cable Ladders Tested for Corrosion Class 7 (Salt spray tested for 720 hours)



CERTIFICATES

ISO 9001:2015



PRODUCT RANGE

- Cable Trays
- Cable Ladders
- Cable Trunkings
- Floor Trunkings
- Covers
- Support Systems
- Accessories



Corporate Office

No: 08,
De Vos Avenue,
Colombo 04,
Sri Lanka.

Tel : +94 11 255 3559
Hotlines : +94 70 677 6655
+94 71 366 4664
+94 71 831 1526

Web : www.leap-cms.com
Email : sales@leap-cms.com